



UNIX/LINUX INSTALL MINI-MANUAL

support.minisoft.com
support@minisoft.com
1-800-682-0200



Unix Environment Install

The eFORMz host install can be installed on a Unix, Linux, HP/UX, RS6000, or Solaris environment. Follow the installation instructions below to install the eFORMz host components in the Unix or Linux environment.

Requirements

eFORMz requires the following for Unix environments processing the eFORMz merge:

Java - Release 1.6 (or greater)

Installation and Upgrade Instructions

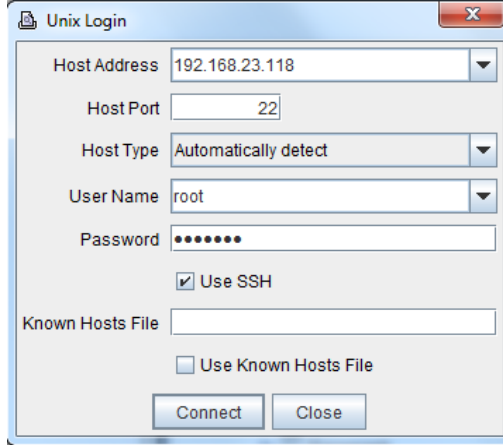
The following instructions assume you have already installed eFORMz on your PC. The eFORMz Composer will be used to install the needed components on your Unix system.

1. From your host machine login as Administrator (root) and create the following directory:

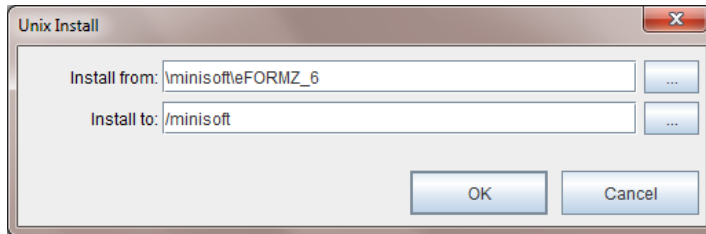
```
mkdir minisoft
```
2. Change the attributes of the Minisoft directory to the following:

```
chmod 755 minisoft
```
3. Open the eFORMz Composer on your PC and select the *Host Tools* menu. From the menu selection select *Unix > Install eFORMz*.
4. The Unix logon screen will appear. Enter your *host IP address*, *user name*, and *password* and then click *Connect*. If using a Secure Shell account, check the *Use SSH* option and identify the *known_hosts* file if necessary.

UNIX/Linux Install



5. The Unix Install dialog box displays. By default, the eFORMz_6 folder is the directory eFORMz will be selecting the installation files from. The default install directory on your host system is the *minisoft* directory under *root*.



6. Click *OK* to start the installation process.
7. The Progress dialog box will display. When the installation is complete you will return to the eFORMz Composer main window.